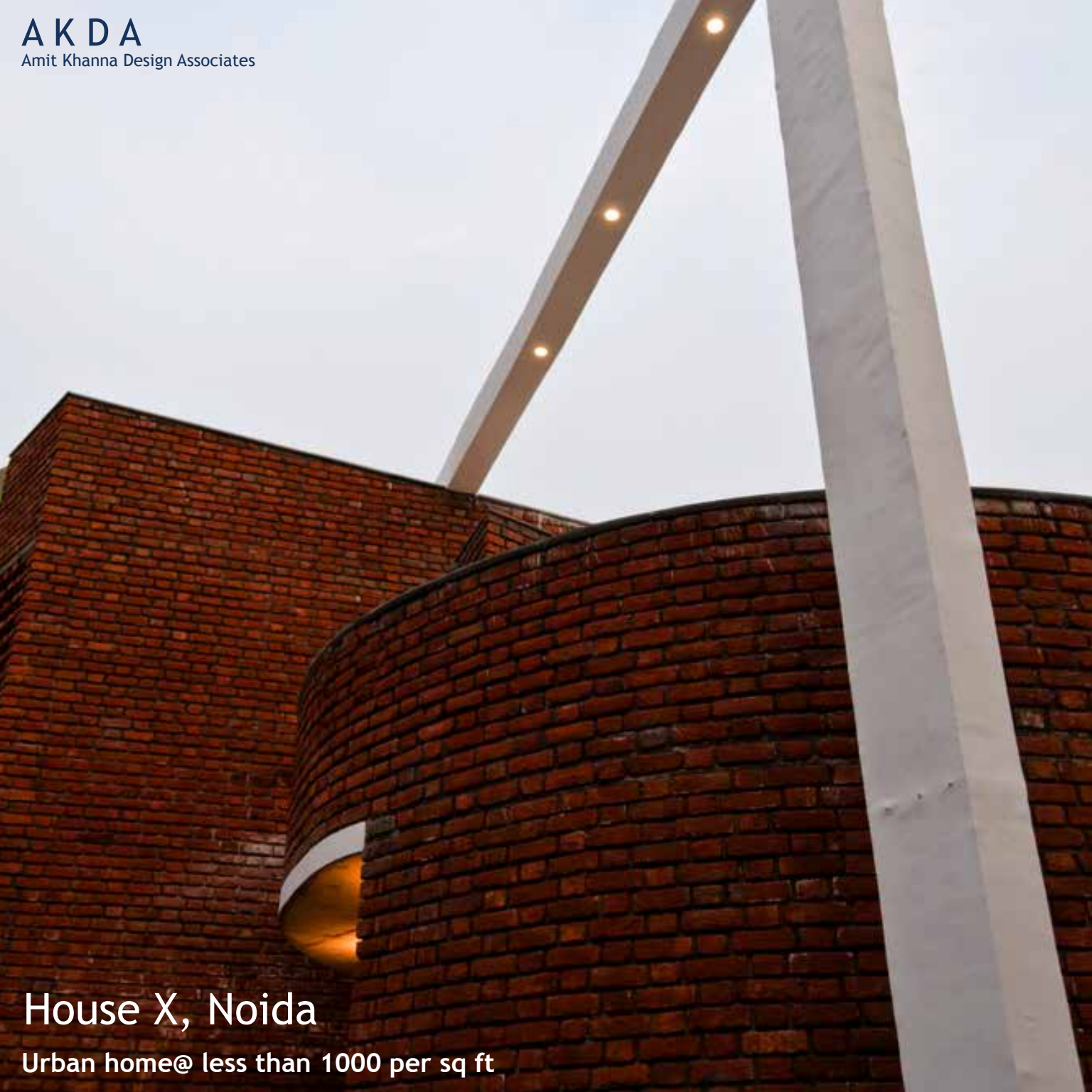


**A K D A**

Amit Khanna Design Associates



**House X, Noida**

Urban home@ less than 1000 per sq ft



Located in a rapidly densifying part of Noida, a suburban region to the east of New Delhi, the 3200SF site is set along a series of private family residences. The zoning plan necessitated sharing a blank wall with the neighbour to the south, with the building line pushed back from the site edge in the other three directions. Conceived as a composition of primary volumes, this three-bedroom house is designed for single family use.

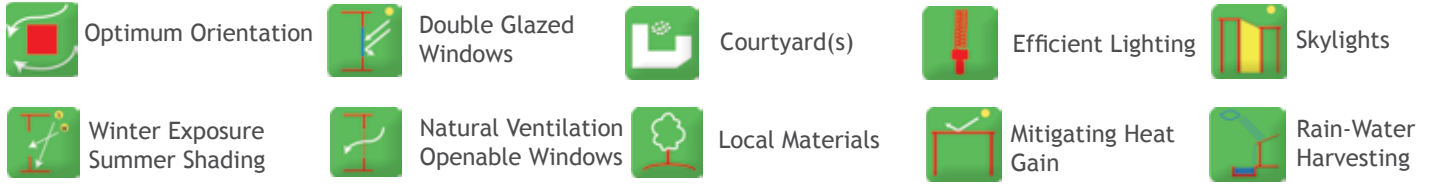


Three main design elements on the front façade - a circular drum as a living space is juxtaposed against a triangular wedge that contains the services, while a rectilinear cube establishes the boundary conditions.



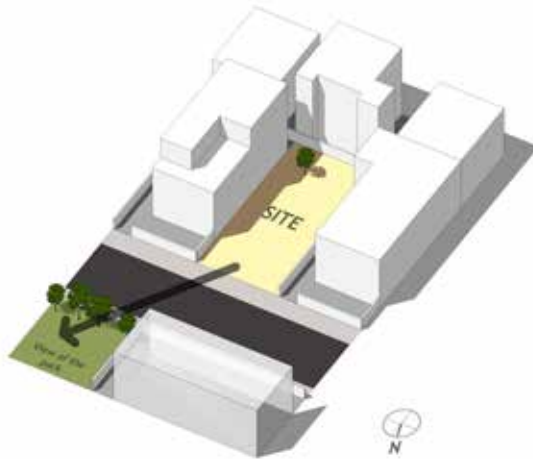
The design create a truly responsible architecture that belongs to the time in which it is designed and built

# Sustainability Matrix



Central to our design ethos is the need to design buildings that perform better than the industry average and raise the bar for ethical construction standards.

built context and sun path



final building with the context

