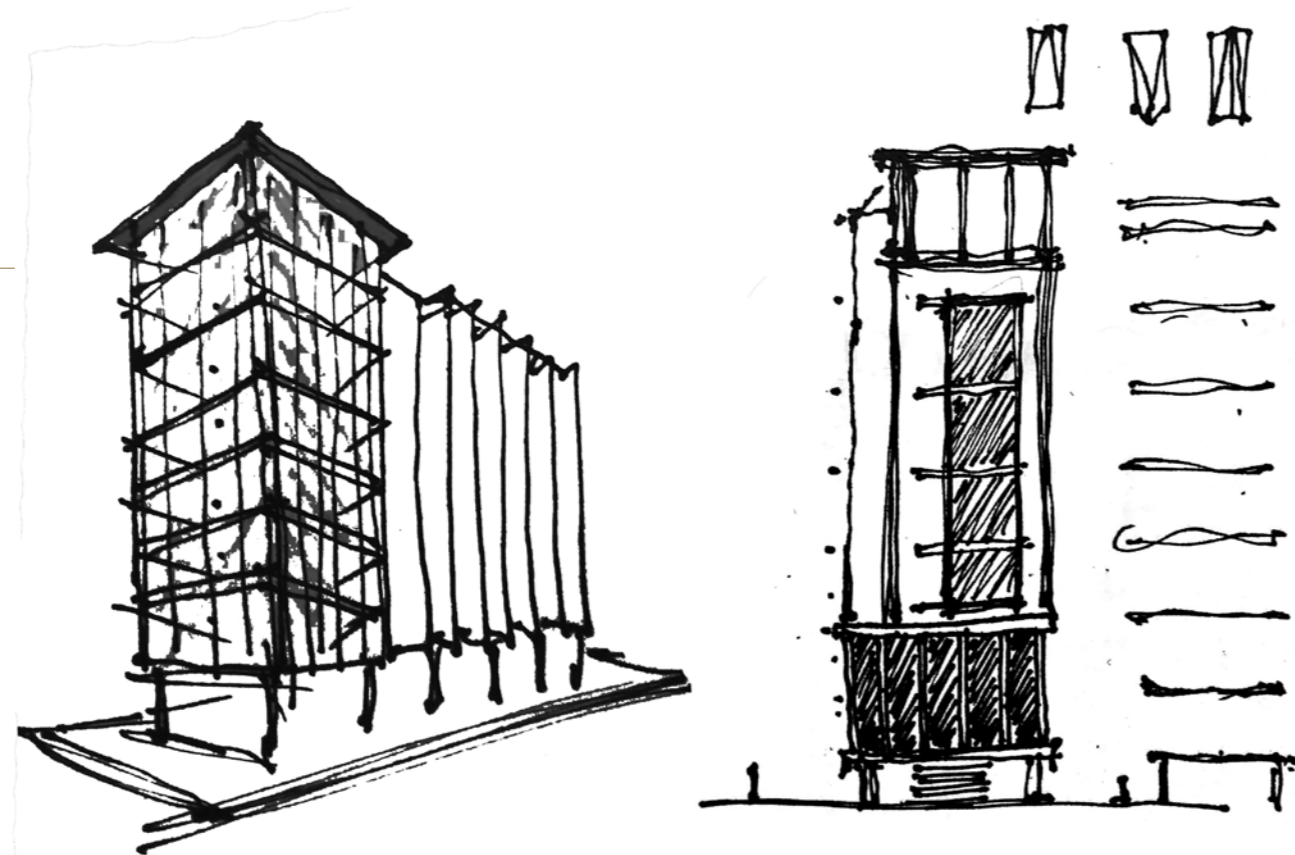


AKDA

NEW DELHI, INDIA

AKDA was established by **Amit Khanna** (born 1978) in 2004. The studio's philosophy is to ensure that regional specificity and sustainability are intrinsic parts of the design process and the final product. The architects work to integrate the disciplines of architecture, interior design, furniture, lighting and product design under a single ethos. Their work has won numerous awards and has been published in architectural and design journals around the world.



A concept for a commercial tower project.



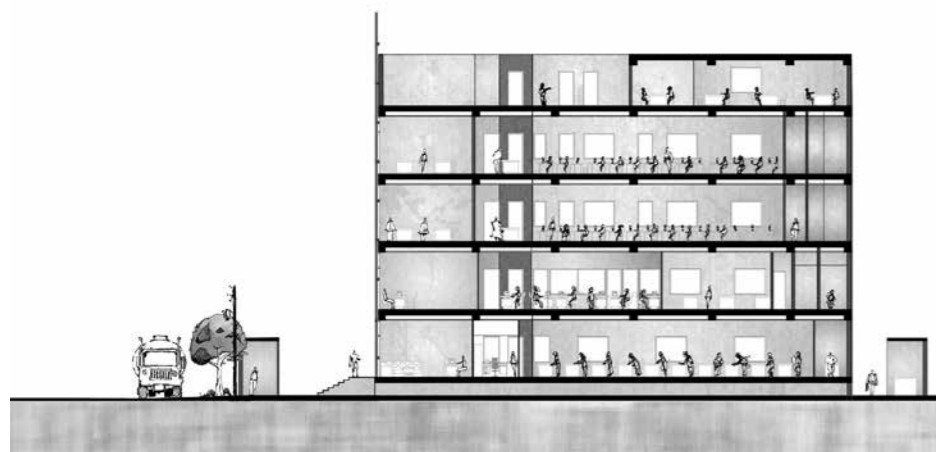


The front elevation with the pattern in its entirety.

The section shows how the design maximizes working space.

The patterned façade lets light inside and minimizes the need for artificial lighting.

A pattern on the façade of the building reflects the fabric that is used inside.



The project in the everyday urban context.

The **Tri-Tessellate** at the Hosiery Complex in **Noida, India**, was completed in **2018**. It is an industrial hub serving the garment manufacturing business. To articulate a meaningful architectural response to such a context, it was necessary to delve deeper into the art of fashion, thus creating a pattern.

Fabrics often revolve around patterns, sometimes repetitive ones and therefore the façade of this building uses layers, creating a multiplicity of surface textures. Cool gray glass is combined with a gradation of blue, gray, and white aluminum panels that seem to emerge from the ground, eventually dissipating into the horizon. The tessellation is achieved through triangular glass panels – the proportions of which were chosen to ensure as little waste as possible. The building was laid out to maximize the efficiency of the manufacturing processes that are housed within.

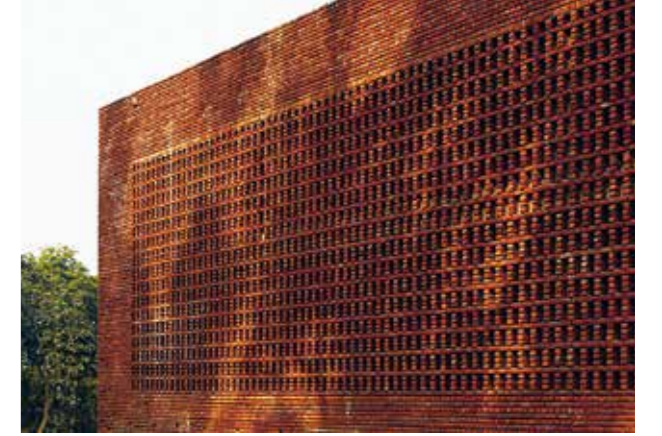
Cuboid House, New Delhi, India, 2012, two light-wells placed inside this apartment block ensure optimal illumination

Ridge House, New Delhi, India, ongoing, built on hard rock with stone manually removed



Automated Warehousing Facility, Faridabad, India, 2014, brickwork façade provides passive insulation resulting in a temperature difference of 10°C between interior and exterior

Pixellate, New Delhi, India, 2015, different colors form a picture from afar, symbolizing the coordinated production process of a garment



AKDA develops processes and products that focus on regional specificity and sustainability.



Pixellate, New Delhi, India, 2015, open spaces inside the garment factory enable complex movement of material, which enters as raw fabric and leaves as finished and packaged product

